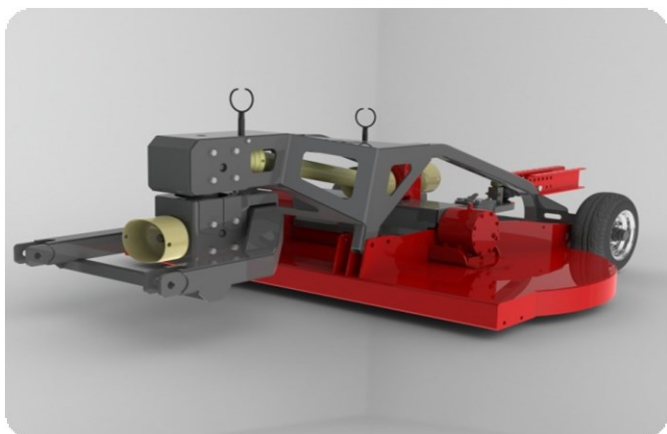


MOWER SG mow-spray trailed



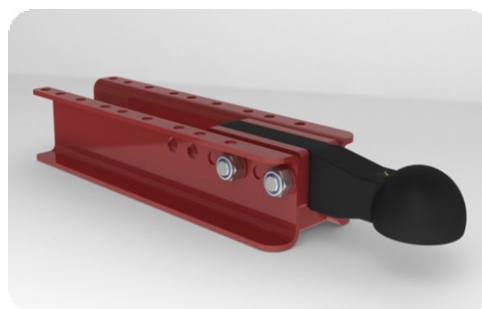
standard machine

- * low construction
- * hitch in lifting arms with double gearbox
- * skids in front
- * no roller in backside , replaced by 4x wheels 195/50B10
- * wheels mounted on semi-axes with adjustable track
- * direct drive , no V-belts
- * 2 rotors with swinging blades
- * discharges grass left and right
- * height adjustable cutting height
- * 540 rpm
- * ball hitch K80 for attachment sprayer
- * pto drive shaft with clutch

The attachment of the sprayer is done with a ball joint K80 from Walterscheid. This guarantees a stable connection between the sprayer and the mower. Notwithstanding the fact that the whole is quite long, it is practical to work with. Due to the stable construction, extra 4 wheels and sturdy connection from the sprayer with the mower, this is very handy when driving on the public road which is rather difficult with the traditional mower-spray combinations.

art.nr.	type	cutting cm	total cm	frame mm	rotor #	blades #	weight kg	price
880-507-162	SG162S	160	170	5	2	4		
880-507-182	SG182S	180	190	5	2	4		
880-507-202	SG202S	200	210	5	2	4		
880-507-222	SG222S	220	230	5	2	4		
880-507-242	SG242S	240	250	5	2	4		

This whole can be equipped with a width-adjustable mower.



The sprayer needs to be equipped with a ball coupling which fits the K80.