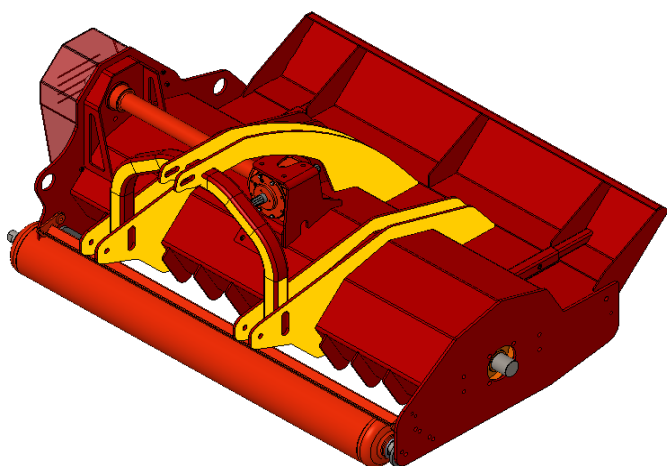


PULVERISER

KZ 255

standard machine

- * front or rear attachment for driving backwards
- * 3-point linkage cat II , \varnothing 28 - 25 mm
- * frame built out of 6 and 12 mm steel
- * \varnothing 245 mm rotor tube with shaft ends \varnothing 70 mm
- * outside diameter flails \varnothing 510 mm
- * high rotor speed
- * frame with internal counter hooks
- * pulley with large diameter
- * 5 V-belts SPB section with automatic tensioner
- * rear roller \varnothing 220 mm with heavy bearings
- * gearbox 750 rpm of 1000 rpm
- * heavy duty flail 2,2 kg with fixing bolt M20
- * included drive-shaft



PIC : KZ180 with option 160-085-022

This machine has been specially designed for heavy wood such as cherry wood which can not easily be shredded.

This is achieved by the high speed and large diameter of the rotor which ensures a high circumferential speed of 54 m/s (1000 rpm)

different models available

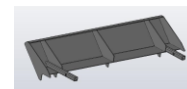
art. nr.	type-model	cutting cm	total width cm	flails #	V-belts #	weight kg	price €
161-055-160	KZ160-255	165	185	12	5		
161-055-180	KZ180-255	185	205	12	5		
161-055-200	KZ200-255	205	230	16	5	950	

optie

160-085-004 1 skids



160-085-022 1 entry plate for wood



160-085-021 1 steel 8 mm instead of 6 mm = model KZ265